

F/C DALIDA

PARTICULARS

Vessel type	Barge
Official Number	1300802
Flag/Port of Registry	Comoros/Moroni
Built	2014
Classification	American Bureau of Shipping

DETAILS

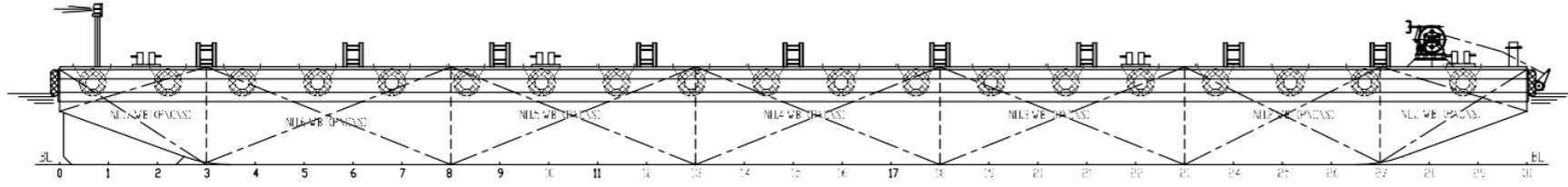
Length overall	54.90 m
Breadth	24.38 m
GRT-NRT	1257/377
Depth moulded	3.66 m
Maximum draft/DWT	2.672 m/3374.29 tons
Lightship draft/weight	0.73 m/828 tons
Clear deck Space	935 m ² (subject to deck layout)
Deck strength	20 t/m ²

MOORING EQUIPMENT

Type	4-point mooring system
Winches	2 x 22 tons Transvictory hydraulic double drum winch
Winches pull load test (SWL)	22 tons @ 1 st Layer
Winches brake holding test	36 tons @ 1 st Layer
Winches wires	Each drum is fitted with 500 m steel wire rope of 30 mm diameter
Winches powerpack Anchors	2 x 55 kW Elec-Hydraulic
Fairleads	4 x Spek anchors @ 3 tons
Towing brackets	4 x Anchor four-roller fairleads, SWL 80 tons 2 x Tow Bracket, SWL 65T Fwd 2 x Tow Bracket, SWL 65T Aft
Bollards	8 x Double Bollards, SWL 45 tons
Fendering	Truck Tires

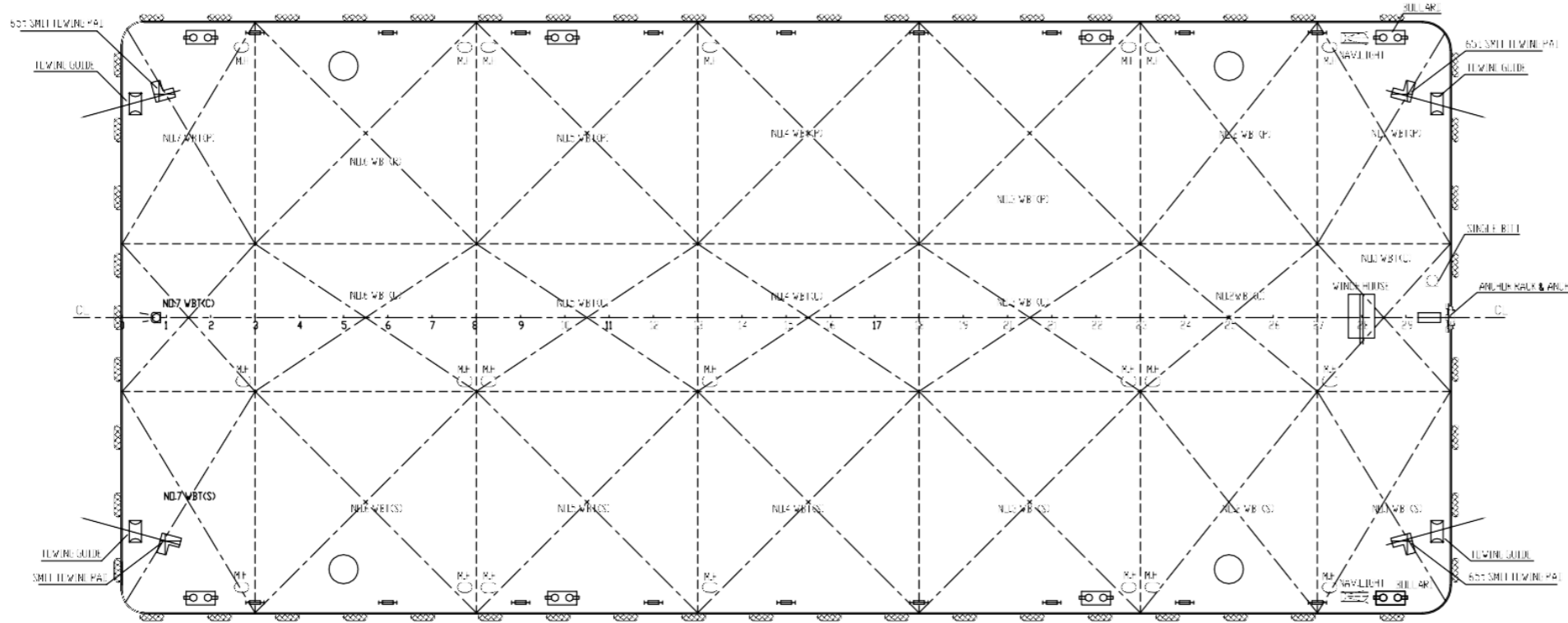
177-71-1J-2

侧视图
OUTSIDE PROFILE



尺寸	单位	数值
Length	m	54.90
Breadth	m	24.38
Depth	m	3.66
Displacement	t	2.66
Deck Area	m ²	22

主甲板
MAIN DECK



FILED FOR
REFERENCE ONLY

NO.	DATE	DESCRIPTION	SCALE
1	2014	GENERAL ARRANGEMENT	SCALE 1:100
2	2014	DECK LAYOUT AND DETAILS WATER TANKS	SCALE 1:100

PROJECT	180'X80'X12'
TITLE	总布置图 GENERAL ARRANGEMENT
SCALE	SCALE 1:100
NO. 1	TOTAL 1

DESIGNER	T. L. L.
CHECKER	XIANGDONGCHEN
APPROVER	
DATE	2014
COMPANY	Hanlong TangMo Shipbuilding Co., Ltd.
PROJECT	180'X80'X12'

COMPANY	南通成达船舶有限公司 Nanlong TangMo Shipbuilding Co., Ltd.
ADDRESS	南通成达船舶有限公司 Nanlong TangMo Shipbuilding Co., Ltd.
PHONE	86-1585-0758-028
WEBSITE	www.cdship.com

Particulars are believed to be correct but are not guaranteed. All figures given are approximate only. Owners reserve the right to amend the specifications without notification.